



WeCount: Citizens Observing Urban Transport

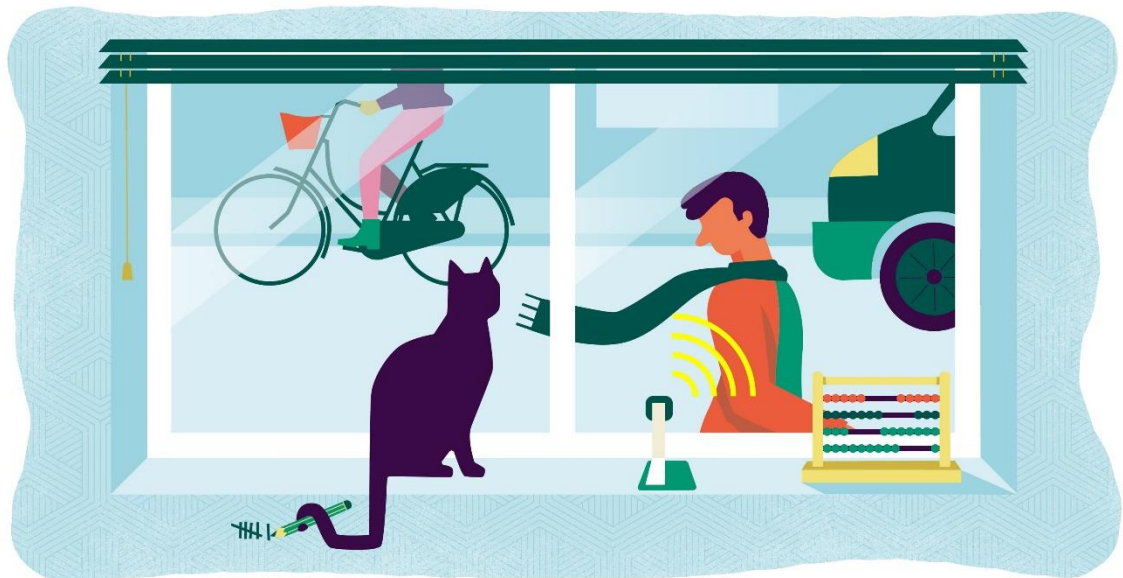
Deliverable D6.2: Website

PUBLIC

Report for:
European Commission
Research Executive Agency (REA)

Date: 19 February 2020

Author: Veerle Vranckx



The WeCount Project has received funding from the European Union's Horizon 2020 research and innovation programme under grant agreement No. 872743

Document Details

| | |
|------------------------------|---|
| Authors | Veerle Vranckx |
| Contact | Veerle Vranckx |
| Creation Date | 19/2/2020 |
| Date of Last Revision | 26/02/2020 |
| Description | This interactive WeCount website serves as the entrance point for the project. The website is launched and will be kept up-to-date with the latest news, events and project developments. |

Version History

| Version | Updated By | Date | Changes / Comments |
|----------------|-------------------|-------------|--|
| V1.0 | Veerle Vranckx | 19/2/2020 | First draft |
| V2.0 | Veerle Vranckx | 26/02/2020 | Taken into account the remarks of Dave Driesmans |



Contents

| | |
|--|---|
| Contents | 3 |
| 1 Description of the website..... | 4 |
| 1.1 Home..... | 4 |
| 1.2 About WeCount..... | 4 |
| 1.3 Networks..... | 4 |
| 1.4 News..... | 5 |
| 1.5 Partners..... | 5 |
| 1.6 Deliverables & Downloads | 5 |
| 1.7 Contact | 5 |
| 1.8 Link to WeCount’s social network accounts..... | 5 |



1 Description of the website

In February 2020, the WeCount consortium launched the WeCount website using the following URL: <https://we-count.net/home>

The WeCount website is the primary dissemination route through which the project will be represented. The website is hosted by Transport & Mobility Leuven as part of their coordination activities.

The top part of the screen shows a navigation pane. At the top-left of the page the project's logo is placed. In detail this section is divided in several subsections:

- 'Home'
- 'About'
- 'Networks'
- 'News'
- 'Team & Partners'
- 'Deliverables & Downloads'
- 'Contact'

There is no restricted part of the website designated to the exchange of information between the partners. For exchange of information, a SharePoint site has been created.

The website is planned to make (final) information available to the project partners and to the wider public.

1.1 Home

General introduction

1.2 About WeCount

The starting page of the WeCount project website contains a description of the project based on the public project summary and information about funding by the European Commission. This part of the website will remain more or less static throughout the project, as it includes information that is not going to change much.

Approach: community involvement/technology used

1.3 Networks

This part of the website will contain detailed information about the pilot cities involved in the project.



An interactive map of Europe with pilot cities will be made, with possibility to access the city's subpage on local language by clicking on the map.

A specific subsection is provided for each of the cities involved, namely:

- Leuven
- Bristol
- Cardiff
- Madrid
- Ljubljana
-

1.4 News

This section will be updated regularly with news and events. It will include all the meetings of the project partners/workshops and important events in which a large group of the consortium partners participate, such as conferences with substantial contributions by the project partners.

1.5 Partners

This part of the website contains information about the partners involved in the project. It shows each partner's logo and provides a link to the partners' homepage. This part of the website will be static.

1.6 Deliverables & Downloads

All public material that has been generated by the project will be present here.

- WeCount project leaflet
- Training materials
- Publications
- Presentations

1.7 Contact

Contact information for general questions and press questions is provided and the legally required information about who is hosting the website.

1.8 Link to WeCount's social network accounts

We are setting up the following social network accounts

- Twitter
- Facebook (also optional per case city)
- LinkedIn Stakeholder Group

